



**J.PSARRAS S+P ,CHART-PIRAEUS (since 1981)**

Ph:+30 210 4123696 4133931 4115482

Fx:+30 210 4170618

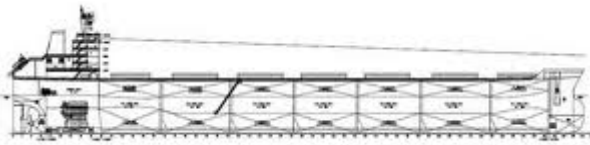
E'Mail: [psarras@psarrasj.gr](mailto:psarras@psarrasj.gr) Website: [www.psarrasj.gr](http://www.psarrasj.gr)  
(Members of Hellenic Shipbrokers Association - 1984)

## **BI-MONTH REPORT**

**END MAY 2015**

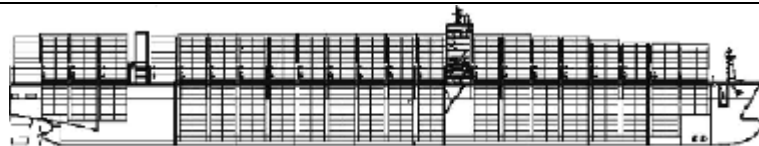
**The scope of this report is to assist our clients and friends with a quick glance every about 15 days to get a feeling of the market by reading the more interesting sales in view of higher or lower prices of the main vessels types as well as the demolition prevailing prices.**





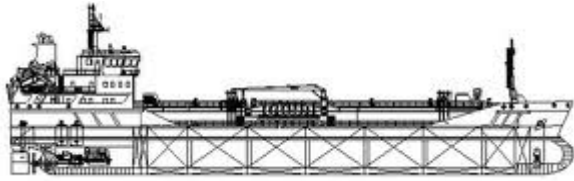
## BULK CARRIERS

NAME	DWT	Y.O.B	P.O.B	PRICE
BLUE CHO OYH	180161	2011	S.KOREA	29 MIL USD TO GREEKS
CECILIA	170565	1999	JAPAN	8,75 MIL USD TO UKRAINIASN
COLWANDS QUEEN	76565	2008	JAPAN	15 MIL USD TO GREEKS
MEDI SINGAPORE	75357	2006	JAPAN	12,8 MIL USD TO UNDISCLOSED
ALPHA GLORY	72270	1999	JAPAN	5,5 MIL USD TO UNDISCLOSED
HUARMY QUEEN	46412	2006	JAPAN	9,5 MIL USD TO GREEKS
SEA RACER	18320	2000	JAPAN	3,5 MIL USD TO TURKISH



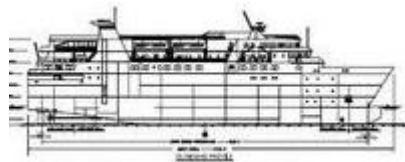
## CONTAINER SHIPS

NAME	DWT	TEU	Y.O.B.	P.O.B	PRICE
RHL FIDUCIA RHL FIDELITAS RHL FILECITAS	63000	5086 5086 4911	2010	CHINA	57 MIL USED EN BLOC TO UNDISCLOSED
PASSAT SPRING	39063	2732	2006	POLAND	14,2 MIL UD TO UK BASED
CORCOVADO	33701	2478	2003	GERMANY	10,5 MIL USD TO UNDISCLOSED
SFL HUNTER CLYDE	39266 39420	2824	2006 2007	S.KOREA	31 MIL USD TO UNDISCLOSED
ANTARES J AURIGA J	17180	1201 1150	2002 2001	GERMANY	10,6 MIL USD TO GERMANS



## TANKERS

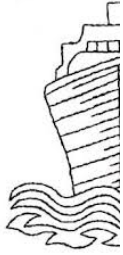
NAME	DWT	HULL	Y.O.B	P.O.B.	PRICE
UNIVERSAL QUEEN UNIVERSAL CROWN	309300	DH	2009	S.KOREA	99 MIL USD TO S.KOREANS
PRIDE	149686	DH	1993	JAPAN	12 MIL USD TO UNDISCLOSED
SONGA CORAL	107000	DH	2005	JAPAN	13 MIL USD TO NORWEGIANS
KASPAR SCHULTE	72718	DH	2004	S.KOREA	21,4 MIL USD TO UK BASED
IVER EXPERT	45809	DH	1997	S.KOREA	9 MIL USD TO CHINESE
SP BERLIN	7700	DH	2007	CHINA	3 MIL USD TO MIDDLE EASTERN VIA BANK



## PASSENGER SHIPS

## RO/RO CRUISE SHIPS

NAME	DWT	Y.O.B	P.O.B	PRICE
PROTOPOROS IV	810	2011	GREECE	5,25 MIL USD TO UNDISCLOSED (Russians probably)
MARIA ELENI	N/A	2011	GREECE	6,4 MIL USD TO UNDISCLOSED (as above)



# DEMOLITION



## BANGLADESH

NAME	LDT	DWT	Y.O.B	P.O.B.	PRICE
CAPE LONDON	20737	172091	1997	JAPAN	374 USD PER LDT
STARFORD	5357	23360	1983	JAPAN	380 USD PER LDT
WESTERN ZENITH	1257	23360	1983	JAPAN	380 USD PER LDT



## PAKISTAN

NAME	LDT	DWT	Y.O.B	P.O.B.	PRICE
AQUAGEM	22096	167102	1997	S.KOREA	378 USD PER LDT
CAPT. NALIH	8032	43648	1985	JAPAN	377 USD PER LDT



## INDIA

NAME	LDT	DWT	Y.O.B	P.O.B.	PRICE
MYUKEN	11052	77738	1996	JAPAN	407 USD PER LDT
ADVANTAGE	9200	27750	1977	JAPAN	380 USD PER LDT
AT14	4539	12230	1992	DENMARK	385 USD PER LDT

### **Disclaimer**

All information stated in this report has been collected from a variety of maritime sources and is presented in good faith and without any guarantee from our part .

J. PSARRAS S+P CHARTERING, shall not accept any responsibility for any errors and/or omissions arising from this report and cannot be held responsible for any action taken and/or losses occurred as a result of the details included in this report.

Recirculation of same is not permitted without the written agreement of the aforementioned company, which is the only entitled one to produce copies of same.